

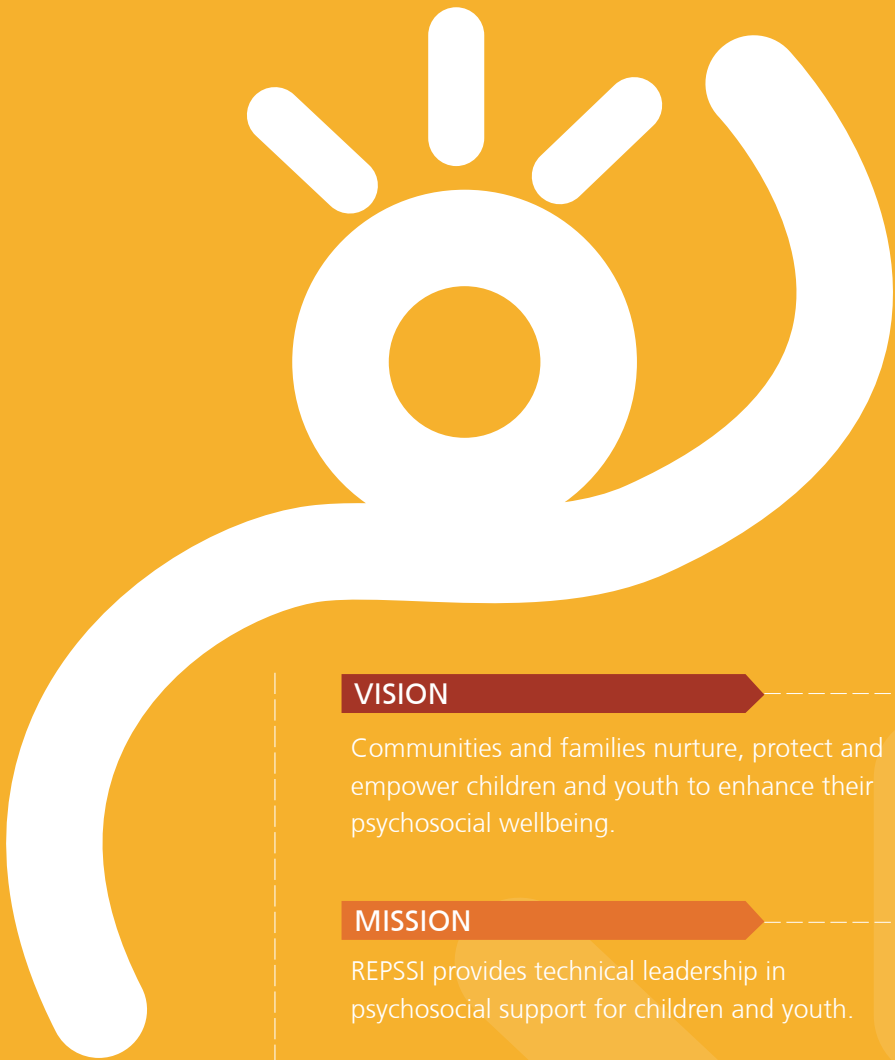
THRIVING AND RESILIENCE



2014

annual report





VISION

Communities and families nurture, protect and empower children and youth to enhance their psychosocial wellbeing.

MISSION

REPSSI provides technical leadership in psychosocial support for children and youth.

OVERALL GOAL

REPSSI contributes to promoting enabling environments for communities and families in East and Southern Africa to preserve and nurture the psychosocial wellbeing of children and youth so that they can live with hope and dignity.

VALUES

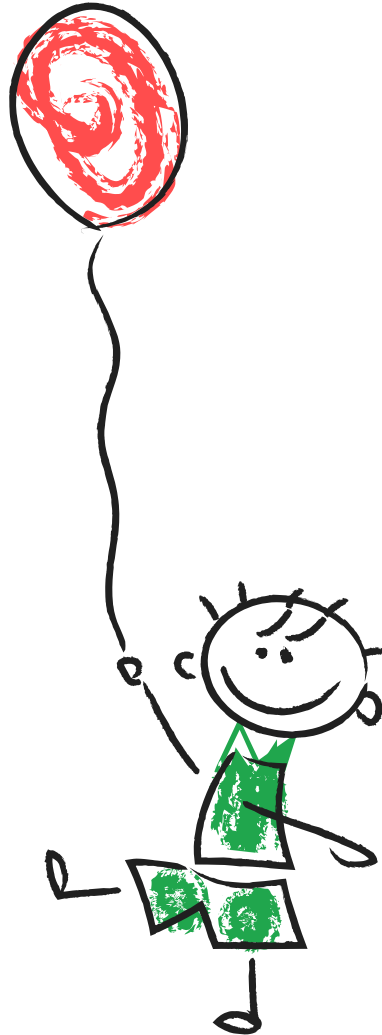
- Integrity
- Excellence
- Innovation
- Diversity
- Collaboration
- Respect
- Caring
- Rights based

Moving the Psychosocial Support and Child protection Agenda forward

Facilitating International Dialogue and learning

Filling the Psychosocial Support Knowledge Gap

Adopting the Social Enterprise Approach to promote REPSSI Sustainability



2014
Annual Report



"Before PSS, my school was inundated by acts of bullying amongst pupils, and absenteeism. Parents withdrew pupils from school at any time due to initiation ceremonies. With the introduction of PSS in schools, these problems are a thing of the past."

Primary School-Zambia

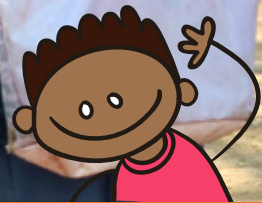


Table of Contents

ACRONYMS AND ABBREVIATIONS.....	6
MESSAGE FROM THE BOARD CHAIRPERSON.....	8
MESSAGE FROM THE CEO.....	9
FAST FACTS.....	12
CORPORATE GOVERNANCE.....	13
THE REGIONAL BOARD OF DIRECTORS.....	14
2014 HIGHLIGHTS.....	16
ACCREDITED QUALIFICATIONS.....	17
NATIONAL PSS FORUMS.....	20
REGIONAL PARTNERSHIPS	21
FINANCIALS.....	37
PARTNERS.....	40



Acronyms and Abbreviations

ACA	Africa Capacity Alliance
ACAC	Associaça Casa Amiga da Criança (Mozambique)
ACERWC	African Committee of Experts on the Rights and Welfare of the Child
ADRA	Acção para Desenvolvimento Rural e Desenvolvimento
ANPPCAN	African Network for Prevention and Protection Against Child Abuse and Neglect
ASRHR	Adolescent Sexual Reproductive Health Rights
AU	African Union
BHASO	Batanai HIV&AIDS Service Organisation
BOCODOL	Botswana College of Distance and Open Learning
BP	British Petroleum
CACAJ	Centro de Acolhimento de Crianças Arnald Jansen
CBWCY	Community Based Work with Children and Youth
CLWD	Children with disability
COW	Children of the World
CRN	Child Rights Network
CSO	Civil Society Organization
DCS	Department of Children's Services (Kenya)
DSD	Department of Social Development
EAC	East African Community
FCTZ	Farm Community Trust of Zimbabwe
FDC	Foundation for Community Development (Mozambique)
FHI360	Family Health International 360
FNB	First National Bank
FOST	Farm Orphan Support Trust
GBV	Gender Based Violence
HIPo-Africa	Harnessing Indigenous Potentials in Africa
HCI	Health Care Improvement project
HWSETA	Health and Welfare Sector Education & Training Authority
IAS	International AIDS Society
ICP	International Cooperating Partner
IDM	Institute of Development Management (Lesotho)
INAC	Instituto Nacional da Criança (Angola)
LLCL	Lifeline Childline (Namibia)
MAGGA	Malawi Girl Guides Association
MASO	Midlands AIDS Service Organization

Acronyms and Abbreviations

MED	Ministério da Educação (Angola)
MESVTEE	Ministry of Education, Science, Vocational Training & Early Education (Zambia)
MGCDSW	Ministry of Gender, Children, Disability and Social Welfare (Malawi)
MGECW	Ministry of Gender Equality and Child Welfare (Namibia)
MGLSD	Ministry of Gender, Labour and Social Development (Uganda)
MINARS	Ministério da Assistência e Reinserção Social (Angola)
MLGRD	Ministry of Local Government and Rural Development (Botswana)
MLSSS	Ministry of Labour, Social Security & Services (Kenya)
MMAS	Ministry of Gender Children and Social Action (Mozambique)
MMPZ	Million Memory Project of Zimbabwe
MoEST	Ministry of Education, Science and Technology (Malawi)
MoET	Ministry of Education and Training (Lesotho, Swaziland)
MoSD	Ministry of Social Development (Lesotho)
MoHSS	Ministry of Health and Social Services
MPES	Mainstreaming PSS into the Education System
MPS	Minimum Package of Services (SADC)
MSH	Management Sciences for Health
NACCA	National Action Committee for Children Affected By HIV and AIDS
NAMCOL	Namibian College of Open Learning
NFSD	Novartis Foundation for Sustainable Development
OVCY	Orphaned and Vulnerable Children and Youths
PASADA	Pastoral Activities and Services for people with AIDS Dar-es-salaam Archdiocese
PSS	Psychosocial Support
RATN	Regional AIDS Training Network (now ACA)
RIATT-ESA	Regional Inter Agency Task Team- East and Southern Africa
SADC	Southern African Development Community
SAT	Southern African AIDS Trust
SOPROC	Network of Child Organizations in Sofala (Mozambique)
SRHR	Sexual Reproductive Health and Rights
TPO	Transculture Psychosocial Support Organization
UNAIDS	Joint United Nations Programme on HIV/AIDS
UNICEF	United Nations Children's Fund
UNISWA	University of Swaziland
URC	University Research Company
WONETHA	Women's Organisation Network For Human Rights Advocacy

Message from the Board Chairperson



In 2014, REPSSI continued to strengthen its leadership and Corporate Governance structures for optimal organisational performance. We made headway in registering country offices in Uganda, Lesotho and Malawi (bringing the number of registered country offices to ten (10) and setting up country advisory boards.

The Regional Board and Country Advisory board meetings were held in accordance with statutory requirements. As part of the organisational development process, I am delighted to announce the recruitment of Mr Gavin Tipper to the REPSSI Regional board. He brings with him accounting, business and investment expertise from the private sector to support the Social Enterprise in pursuing REPSSI's sustainability initiatives.

As the 2011-2015 strategy ends in 2015; REPSSI will develop a new strategy for the next five year period. Strengthening of country offices will continue, registration of REPSSI in Angola, Swaziland and Kenya is underway and alignment of the Zimbabwe registration to the regional registration is also on track. The REPSSI regional and country advisory boards will continue to provide leadership for REPSSI's work to strengthen the psychosocial support agenda.



Kaumbu Mwendela
Board Chairperson

"For me and my husband, blood pressure and headaches are a thing of the past as we are worry free and we've never been happier than this, thanks to the livelihood and PSS programme".

Felista Mwando

Chief Executive Officer's Remarks

In 2014, REPSSI again delivered significant achievements, despite a volatile and fast-changing environment. At the same time Africa is emerging as an important economic player and is strengthening its commitment to upholding children's rights. REPSSI strengthened its efforts to mainstream psychosocial support into Government programmes through regional bodies. Progress to domesticate the SADC Minimum Package of Services continues to be positive. Other regional efforts include work through RIATT-ESA and the EAC. Internally, staff was recruited to boost programming and resource mobilisation efforts. The Social Business Development is diversifying and expanding efforts in resource mobilisation and finding 'customers' for REPSSI service offerings.

In 2014 REPSSI set up the Thought Leaders Group, comprised of nine leaders in PSS from across the globe to draw on global, regional, national and community level expertise. REPSSI is being kept aware of global PSS trends and is adapting them to the regional context.

REPSSI successfully raised the profile of psychosocial support in Botswana and Mozambique through National PSS forums. These forums were attended by participants from government ministries and partner organisations. Of note, was the participation of Private sector (BP, Mozal and Coca Cola) at the PSS forum in Mozambique. REPSSI launched and showcased Mainstreaming PSS into the Child Services programme in Angola and the National OVC conference in Lesotho showcased the SADC PSS Framework.



Noreen M Huni
Chief Executive Officer



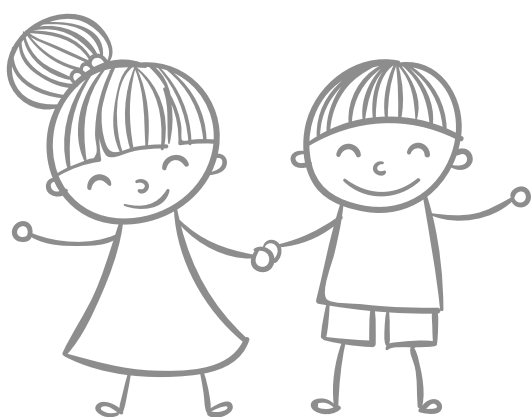
Two hundred and fourteen (214) delegates from 10 countries attended the Teachers' Diploma Expo in Zambia and were impressed by the positive improvements that they observed first hand. As a follow up from this expo, a few members would like to roll out the same programme in their countries. Six hundred and sixty eight (668) students in nine countries graduated from cycle 3 of the Certificate in Community Based Work for Children and Youth. Preliminary findings from assessments of the certificate course in Swaziland and Lesotho show that graduates have improved their skills in dealing with children and volunteers secured employment after training.

REPSSI developed resources to include, Empowering Girls, Peace is a Decision, Making Communities Safer, PSS Camps and Clubs Tool kit and Working with Infants & Young children and endorsed Better Parenting in response to emerging psychosocial needs within the region. REPSSI also developed a wellbeing tool kit for employee wellness.

In the final phase of the strategic implementation plan 2011 to 2015, REPSSI will focus on documenting models that have proven to be successful, disseminating the lessons learnt through the regional PSS Forum on Love, Care and Protection: from infancy to adolescence, to be held from 1- 3 September 2015.

I thank our ICPs, the board members, regional and in country partners for their continued commitment and dedication to working with us in ensuring that programmes serving vulnerable families and their children have access to psychosocial support. I also thank the REPSSI staff for their commitment towards achieving the strategic implementation goals set out in the 2011-2015 strategy. I am confident that the next strategy will cement REPSSI's PSS technical leadership. By working together, the REPSSI way, we will continue to deliver value in contributing to a more inclusive world that nurtures, empowers and protects its children.

Noreen M Huni
Chief Executive Officer



“Through the journey of life programme, I have learnt how to love, care and support my children. Recently my older daughter who was doing grade 9 fell pregnant and I did not marry her off or chase her away from my house because of PSS skills and knowledge”.

Mr. Caston Banda



REPSSI
Psychosocial Wellbeing

Stanbank
A member of the Stanbank Group

Supported Open and Distance Learning (SODL)
CERTIFICATE COURSE
Community Work with Children and Youth

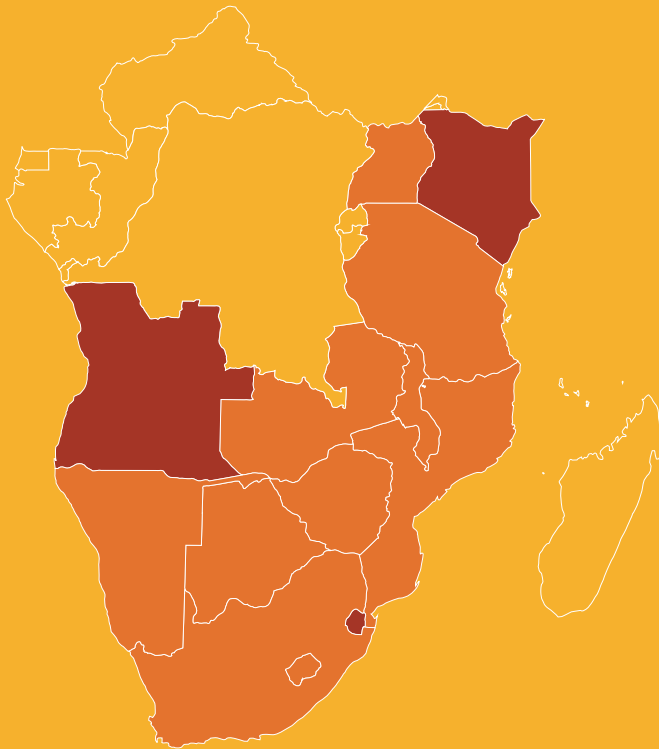
Sufiane Joyce Magotho
Certificate of Completion
Community Work with Children and Youth
REPSSI



“the Community-Based Work with Children and Youth, certificate course was designed to bridge the capacity or rather the knowledge gap among child care and protection providers, especially in peri-urban and rural settings, including volunteers who work with children and youth and this course is accredited by the Botswana Qualifications Authority (BQA)”

Permanent secretary in the Ministry of Education Skills Development, Dr Richard Mathare (Botswana)

Fast Facts from 2014



OPERATING IN **THIRTEEN** COUNTRIES OF SOUTHERN AND EASTERN **AFRICA**

REPSSI is **registered in 10 Countries**, REPSSI continues to **pursue registration in all 13 countries** where it operates.

"What impressed us is how REPSSI works. In the good sense of the word, REPSSI is like a virus... small and agile. Your cars aren't branded, you don't have big signboards. You work inside the system. Your approach is what civil society should be doing."

Richard Graham, Head of International Grants, Comic Relief, March 2014



Corporate Governance

REPSI is governed by an elected regional board and country advisory boards in the countries where it is registered.



"I learnt a lot from the psychosocial care and support because I was taught how to learn, love and care for my friends be they male or female."

*Said a boy who now works in the school's AIDS Action Club.
Westwood Primary School*

The Board of Directors



Dr Lucier Cluver
(United Kingdom)



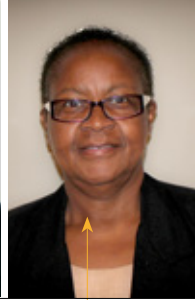
Dr Constance Malega Kganakga
(South Africa)



Noreen M. Huni
Chief Executive Officer
(Zimbabwe)



Kaumbu Mwendela
Board Chairperson
(Zambia)



Hon. Justice Euna Makamure
Board Vice Chairperson
(Zimbabwe)



Dr Lewis Ndhlovu
(Zimbabwe)



Jeanne Ndyetabura
(Tanzania)



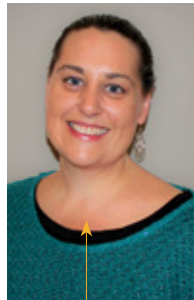
Pelucy Ntambirweki
(Uganda)



Cynthia Pongweni
Board Treasurer
(Zimbabwe)



Nyambura Rugoiyo
(Kenya)



Dr Alison Schafer
(Australia)



Prof. Lorraine Sherr
(United Kingdom)



Gavin Tipper
(South Africa)



14 | SEGUNDA-FEIRA, 22 DE SETEMBRO DE 2014

DIREITO E JUSTIÇA

Dossiers Factos

Assistência psicossocial mobiliza governos e ONG's

Fenómenos como pobreza, doenças crónicas com destaque para o HIV/Sida, calamidades naturais, assim como conflitos militares, étnicos e religiosos afectam psicologicamente as suas vítimas, principalmente crianças e jovens. Muitos ficam em situação de orfandade, sem abrigo e outros traumatizados, entretanto, quando se leva a cabo acções de assistência às vítimas destes males prioriza-se o apoio material e financeiro e pouco se dá atenção ao psicológico e emocional, o que em muitos casos traduz os esforços em fracasso.

Por: Bernardo Mbembele

A situação descrita começa preocupar algumas organizações não governamentais, por sua vez influenciam governos para num contínuo cada vez mais assolado por males referenciados. A Iniciativa Regional de Apoio Psicossocial (REPSSI) é uma organização não governamental regional que nos últimos anos tem se dedicado a acções de advocacia e introdução de serviços psicossociais nos estados à crian-



Imagens: Albino Mahumana

rias individualidades nacionais e estrangeiras, chefes de departamentos do Ministério da Mulher e Acção Social e representantes de outros ministérios que tutelam assuntos sectoriais das crianças e jovens, Educação, Saúde, Juventude e Desportos, entre outros órgãos estatais. Estiveram também representantes da sociedade civil, técnicos e activistas que intervêm no atendimento de Crianças e Jovens, representantes do sector privado...



2014 Highlights

- National PSS guidelines being developed in Namibia, South Africa, Kenya & Uganda
- Five New Resources under development: Empowering Girls, Peace is a Decision, Making Communities Safer, PSS Camps and Clubs Tool kit and Working with Infants & Young children and endorsed Better Parenting
- Thought Leaders Group established and met twice
- Feasibility study on the "Say No To Gender Based Violence" was launched

KNOWLEDGE DEVELOPMENT

ADVOCACY

- National PSS forums in Botswana and Mozambique
- Alignment of domestic policies to the MPS for OVCY by SADC Member States
- Inaugural CBWICY Alumni network meeting held
- 214 delegates from 10 countries attend the Teachers diploma expo in Zambia
- RIATT- ESA initiated engagement with the EAC

- Reach: 1 927, 994 Children
- 1,762 partner staff trained through a network of 36 partners
- 1,215 registered on CBWICY for 2015
- 668 graduated with Certificates in CBWICY
- Working with 8 Academic Institutions to successfully deliver the CBWICY course
- 3 Institutions deliver the Teachers' Diploma
- Working in partnership with Governments in 13 countries to support PSS service areas through National Action Plans for OVCY

TECHNICAL SUPPORT

REPSSI has continued to roll out the Community Based Work with Children and Youth (CBWCY) certificate programme through national academic institutions and distance learning colleges. Where necessary, the institutions have added a few more modules before they accredit the course, as has happened with the University of Swaziland. Six hundred and sixty eight (668) students from nine countries graduated in 2014 with the CBWCY certificate.

Assessing the Impact of the certificate course in Community Based Work with Children and Youth

Data from studies that REPSSI has commissioned indicate that the certificate course is having impact. The Swaziland Country Task Team (CTT) commissioned an assessment of the graduates in 2012 and REPSSI commissioned a similar assessment in Lesotho in 2014. This data provides promising evidence that the Certificate Course is successfully building the skills of a range of members of the social services workforce, to address the psychosocial needs of orphans and vulnerable children and their families.

Cycle 3 graduates from eight countries completed a self assessment about skills, knowledge and attitudes that changed during the course. Changes included attitudes about corporal punishment and skills to work directly with children and their families. In the upcoming Cycle 4, REPSSI is planning to collect more rigorous data before and after the course. In addition, we will collect qualitative narratives documenting changes in the students as they engage with the course material.

Alumni Network

REPSSI launched an Alumni Network for the 2,135 CBWCY graduates at a meeting held in November 2014. Some highlights included the alumni members working as a medium through which new students are recruited. Alumni are also working as advocates on the need for community workers to have competencies in PSS provision. They are actively promoting the CBWCY course to other community workers within the organisations that they are working in as well as the communities where they are based.

The course helped me to change my attitudes toward children. Now I am keen and interested in providing support to children and I am also patient with them. Before I used to be impatient with children.

With this change in my attitude children are free to come to me for support and this makes me feel good and I see the good results of my work

My being close to children has also opened way for me to work closely with the families as they accept me. It was not like this before the course.

Teachers' Diploma Expo

REPSSI showcased the Teachers' Diploma in Psychosocial Care, Support and Protection (the first of its kind in the region) which is being rolled out in partnership with the Ministry of Education, Science, Vocational Training and Early Education and Chalimbana University in Eastern, Western and Lusaka provinces of Zambia. This is part of the programme to mainstream PSS into the Education System (MPES) funded by Comic Relief in Zambia. The heart of the diploma is new knowledge and skills to equip and empower teachers to create inclusive, participatory, safe and protective schools through partnering with the learners, families and the community.

The Expo was attended by 214 participants including 25 senior government officials from Education Ministries, Training Institutions and NGOs in Angola, Botswana, Kenya, Lesotho, Malawi, Mozambique, Namibia, South Africa, Swaziland, Tanzania, Uganda and Zimbabwe.

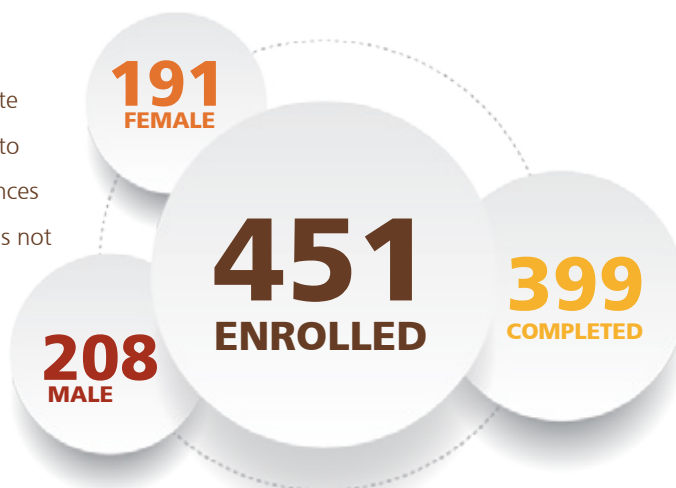
Delegates were briefed on the delivery of the Teachers' Diploma and the evaluation being conducted in partnership with Wayne State University, the University of Zambia and RuralNet. They visited schools and observed some changes resulting from the introduction of the Teachers' Diploma. These include: improved relationships between teachers and learners, decreased corporal punishment; increased networking between the schools and the community resulting in schools addressing health, child marriages, and infrastructure, water and sanitation challenges; creating safe spaces for the children at school and between the school and their homes. Mainstreaming PSS in schools equips schools and communities to deal with social challenges and help children to reach their potential.

Visiting delegates all left very keen to roll out the Teachers' Diploma in their countries. REPSSI country teams will support this process with the Ministries of Education in 2015. Change of this magnitude will take some time.



Teacher enrolment and graduation numbers

11.5 % did not complete the course, largely due to transfers to other provinces where the programme is not yet offered



Assessing the Teachers' Diploma

Baseline data indicates strong support for the underlying premises of the Teachers' Diploma Programme. The premises include the importance of a clean and safe school environment, a school and classroom in which all students are treated fairly and equitably, strong teacher-student relationships and the involvement of caregivers to increase teachers' self efficacy and ability to make changes, improve student's psychosocial well-being, decrease bullying behaviours and improve school performance.

Between May and July 2014, the MPES evaluation team (Wayne State University, the University of Zambia and RuralNet) undertook the follow up survey. A total of 341 teachers (75.9%) and 1285 students (73.2%) were interviewed. An extensive data cleaning exercise was undertaken to prepare for the analysis. Final results are expected by July 2015.

Teachers with PSS training are well placed to deal with the problem of bullying, which negatively affects those being bullied and the bully, him or herself.

A learner, who was a bully and a regular absentee from the school, underwent a transformation when her teacher came back from the PSS programme and paid attention to her bullying problem. It was discovered that the girl was a bully because she was constantly beaten by her father. She recalls:

"I was a bully and not even boys could stop me. This is because I was also constantly being beaten by my father, and the only way to relieve this was to bully and beat others. My teacher called me and counselled me and he also advised me to start acting like a lady and concentrate more on my school work, which I did. Since then my performance in school has improved and my friends are no longer scared of me".

A quote from a primary school learner



National PSS Forums



Following the success of the 2013 Regional PSS forum, Botswana and Mozambique were the first two countries to host National PSS forums. Both forums were preceded by children and youth pre-forums with 30 and 35 children and youth aged between 12 and 24 participating. This ensured that children's voices are heard. The issues raised by children and youth were similar. They included prostitution, sexual relationships, peer pressure, parenting skills, drugs and alcohol. The children and youth also had an opportunity to recommend solutions to these problems, which were presented at the National forum by selected youth representatives.

140 and 100 participants attended the Botswana and Mozambique Forums respectively. The national forums provided a platform for stakeholders (including Government, Civil Society, Academia, Private Sector and Media) to share what they are doing to raise awareness about child protection, children's issues and improve the psychosocial wellbeing of the children. Both forums were covered extensively in national and regional TV, radio and print media .

Social Business Development

During 2014 SBD concentrated on building systems and structures as a foundation for resource mobilization. REPSSI worked with various partners, such as NFSD, Henley-Eskom, to define its product offerings. One of the innovative products that has been developed is the wellbeing toolkit for employee wellness. A product and stakeholder matrix, which included an extensive funder mapping strategy, was developed.

Marketing of existing products such as the CBWCY certificate included documentation of impact and best practices. REPSSI's branding strategy focused on increased media coverage through events such as PSS forums, Child Protection week, the Certificate graduations and increased social media activity to increase REPSSI's visibility.

SBD Road Shows took place starting with 5 countries -Uganda, Lesotho, Namibia, Tanzania, Zimbabwe, over 40 organisations (inclusive of private sector) were visited with promising funding. In Tanzania- CRS contracted REPSSI to train Staff and ECD teachers. The introduction of the Wellness programme was well received in the corporate sector. This work was made possible with funding from NFSD.

Social Enterprise contribution to REPSSI's income was 593 601 Euro, which represents 9% of total income.



Southern African Development Community (SADC) – Minimum Package of Services (MPS) orientation

REPSSI has been a partner to SADC in the implementation of the SADC strategic plan for OVCY and domestication of the Minimum Package of Services. In 2014 progress was made in the operationalisation of the SADC Minimum Package of Services.

An orientation workshop on the Minimum Package of Services (MPS) using the guidelines developed in 2012 was conducted for 27 national focal persons, representatives from education and from national networks of civil society organisations and 23 representatives of regional NGOs, UN agencies, SADC and international Co-operating partners. The workshop reviewed progress and explored partnership modalities for supporting the implementation of the MPS at national level. Member States developed plans for implementation and progress has been made in Botswana, Namibia, Mozambique and Lesotho. Progress includes aligning country standards of care for OVCY to the Minimum Package of Services in Mozambique, plans for domestication of the Minimum Package of Services and the PSS framework developed by stakeholders including the Ministry of Education & Skills Development, Private school representatives, academic institutions, social workers and some funding partners in Botswana.



Other achievements of the SADC OVCY programme supported by REPSSI:

- The development of the SADC standards for integrating SRH/HIV & AIDS
- The development of a draft SADC Declaration on Youth Development
- The Draft SADC Youth empowerment and participation strategy and business plan 2015-2020, which was endorsed by SADC Ministers responsible for youth in April 2014.

SADC Parliamentary Forum

REPSSI was accorded status of technical advisory partner and permanent observer to the Standing Committee on Human & Social Development and Special Programmes of the SADC Parliamentary Forum.

RIATT- ESA

A new strategic plan for 2015 – 2018 was developed, focusing on two key strategic objectives:

- 1. Care and Support:** To provide technical assistance to SADC, EAC, and AU to support their Member States to strengthen provision and access to comprehensive care and support services for children and their families/carers, and which are sensitive to the changing needs of girls and boys through their life cycle, by 2018.
- 2. Social Protection:** To advocate for comprehensive HIV- and child- sensitive social protection systems to address the structural drivers underlying the pathways between children's vulnerability and HIV transmission, by 2018.

Sustaining and Strengthening Engagements in the Region

RIATT- ESA strengthened its engagements through participation in

- the EAC Technical working group on HIV and AIDS, STIs and TB, the forum of the EAC Partner States Heads of National AIDS Councils
- The 3rd Forum of the EAC Partner States Heads of National AIDS Council
- The organising committee of the EAC HIV and AIDS symposium to take place 25-26 March, 2015
- Membership of the Coalition for Children Affected by AIDS
- Together with REPSSI contributed to activities for the interagency Working Group on Child Protection Systems Strengthening (IAWG CPSS)
- A member of the Social protection, Care and Support working group of the IATT

Save the Children International

REPSSI is partnering with Save the Children international to promote sexuality education within psychosocial support programmes and to integrate PSS into sexuality education. Ten REPSSI staff have been trained and are now sharing this training with partners.

Synergos

REPSSI is partnering with the Synergos Institute to promote social connectedness and overcome isolation through our materials and programmes. The work is made possible with thanks to funding from the Samuel Family Foundation.



ANGOLA

BP leads in delivering PSS to vulnerable communities



Felix Jeronimo

Country Representative

Number of children reached	Female	17 959
30 001	Male	12 042
Short Training	Female	19
47	Male	28

REGISTRATION STATUS: In progress – documents submitted

COUNTRY ADVISORY BOARD: Pending Registration

Public Private Partnership Mainstreaming PSS into Child Services

In January 2014 the historic launch of the Mainstreaming of PSS into child services in Angola took place. This REPSSI and INAC initiative funded by BP is implemented in Cunene and Luanda in partnership with ADRA (Acção para Desenvolvimento Rural e Desenvolvimento). The event was attended by officials from government (MINARS and INAC), civil society (UNICEF and CACAJ) and the private sector. The event was well covered through print, audio and visual media, creating awareness for the need for PSS in Angola.

In November REPSSI trained 47 resource people in Luanda and Cunene, in the South, who will now work in their communities and train a minimum of 120 community-based child service providers. The project aims to benefit at least 9000 children.



PARTNERSHIPS:

- BP (British Petroleum)**
- ADRA**

BOTSWANA



Kefilwe Malebe

Country Representative

National PSS Forum attended by 140 participants

Number of children reached

66 641

Female **29 197**

Male **37 454**

CBWCY

54

Female **49**

Male **5**

REGISTRATION NUMBER: EX2012/7769

COUNTRY ADVISORY BOARD: Noreen Huni, Kefilwe Malebe, Jennifer Marinelli, Ruth Radibe, Kgomotso Sejo, Dorothy Tlagae (Chair)

National PSS Forum

The first National PSS forum was a partnership between REPSSI, the Department of Social Protection and Civil Society partners. It adopted its theme from the 2013 regional PSS forum "No PSS without Child Protection and No Child Protection without PSS." 35 Children including Children living with disabilities from 5 districts in Botswana participated in the children and youth forum.

There were 140 participants at the National forum.

Recommendations from the forum included:

- Harmonize all legislation to recognize the definition of a child as in the Children's Act of 2009.
- Strengthen collaboration of pertinent stakeholders on PSS issues
- Consolidate documentation & evidence on services provided for children.

- Strengthen families and communities
- Strengthen PSS in the education sector
- Strengthen service providers (social workers/teachers/police etc.)
- Provision of PSS interventions for children with disabilities

"The forum was very good. The success is measured in what people got, not the numbers that attended. We really appreciate and treasure the partnership we have"

Ruth Radibe, Director Department of Social Protection.

REPSSI and the Department of Social Protection held a media breakfast to announce the PSS Forum. As a result, the event was well profiled and covered through radio, television and print media.



PARTNERSHIPS:

Ministry of Local Government & Social Services

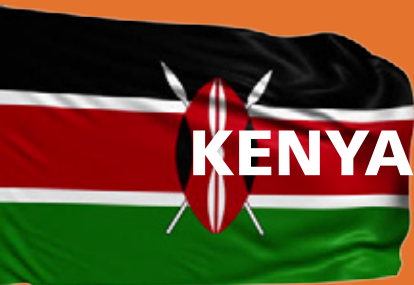
Ministry of Education & Skills Development

Marang Child Care Network Trust

PCI

BOCODOL (Delivery of CBWCY)

Stanbic (sponsor of CBWCY Students)



Supporting development of PSS Guidelines and The new certificate cycle reintroduced



Lynette Mudekunye
Regional Advisor

Number of children reached	Female	99 760
198 582	Male	98 822
Short Training	Female	18
39	Male	21

REGISTRATION STATUS: In Progress

COUNTRY ADVISORY BOARD: Part of the East Africa sub regional Advisory board

National PSS guidelines

REPSSI partnered with the URC to support the Department of Children's Services (DCS) in the development of draft National PSS Guidelines. The guidelines were submitted and will be piloted in 2015 before they can be finalised.

Re- Introduction of the Certificate Programme

Through partnership with the DCS and Hope WorldWide, the Certificate programme was re introduced in Kenya for cycle 4.



PARTNERSHIPS:

- Department of Children's Services DCS**
- Kenya Orphans Rural Development Programme (KORDP)**
- Kibera Integrated Community Self-Help Programme (KICOSHEP)**
- Hope WorldWide**
- ANPPCAN**
- ChildFund Kenya**
- Rafiki ya Maendeleo**



LESOTHO

Inclusion of PSS in the National Policy framework



Phomolo Mohapeloa
Country Representative

Number of children reached	Female	13 081
	Male	12 107
25 188		
CBWCY	Female	53
	Male	17
70		
Short Training	Female	16
	Male	4
20		

REGISTRATION STATUS: 2014/94 PVO status chapter of REPSSI

COUNTRY ADVISORY BOARD: Pending Registration



PSS Camps & Clubs for Children Living with HIV

REPSSI documented the Sentebele model for mainstreaming PSS into health services for children and adolescents living with HIV and developed an accompanying tool kit for use in Network Clubs which was pretested. Fifteen (15) Network club facilitators were trained on the use of the toolkit, for implementation to begin in 2015.

The model, which is implemented in collaboration with the Ministry of Health and Baylor International Paediatric AIDS initiative (BIPAI), is based on the premise that improved literacy, stronger peer networks, family support and comprehensive adolescent sexual health information contribute to better health outcomes.

OVC Forum

REPSSI participated in the Lesotho OVC conference co-hosted by the Government of Lesotho MSH, UNAIDS and UNICEF. The SADC minimum package and the PSS framework were highlighted at this forum

CBWCY Delivery

We have reached agreement with the IDM that it will become involved in the delivery of the certificate

PARTNERSHIPS:

- Ministry of Social Development**
- Sentebele**
- World Vision International**
- Institute of Development Management (Delivery of CBWCY)**



MALAWI

Feasibility study of Say No to Gender Based Violence package

Member of Social Welfare Technical Working Group, PSS sub-committee and Child Development/Child Protection Technical Working Group



George Alufandika

Country Representative

Number of children reached	Female	64 800
121 868	Male	57 068
CBWCY	Female	24
76	Male	52
Short Training	Female	31
62	Male	31

REGISTRATION STATUS: Registered as a Subsidiary to REPSSI regional NGO/R/14/38 C820/2014

COUNTRY ADVISORY BOARD: George Alufandika, Noreen Huni, Gauton Kainja, Anderson Kamwendo, Hyacinth Kulemeka(Chair), John Makina, Dr Dorothy Namate, Humphrey Sibande

Feasibility Study of Say No to Gender Based Violence package

The three part package aimed at reducing gender-based violence and promoting peace was developed by REPSSI in partnership with Dr. Kurt Madoerin and KwaWazee. The trilogy consists of:

- Empowering Girls
- Peace is a Decision – for Boys
- Making our community safe – Community conversation (based on the Journey of Life methodology)

A feasibility and acceptability study to

test the package began in 9 schools in 3 education Zones within Lilongwe province. Preliminary results are expected during the third quarter of 2015.

CBWCY Delivery

The certificate is now being delivered through Magomero.



PARTNERSHIPS:

Ministry of Gender, Children, Disability and Social Welfare (MGCDSW)

Ministry of Education, Science and Technology

MAGGA

Consol Homes

SAT

Magomero College (Delivery of CBWCY)



MOZAMBIQUE

National PSS Forum attended by private and civil partners

Resources translated into Portuguese

Member of the PSS Technical Working Group



Julio Mutemba
Country Representative

Number of children reached	Unknown	81 352
102 295	Female	8 799
	Male	12 144
Short Training	Female	109
232	Male	123

REGISTRATION STATUS: Non Governmental Organisation. National Government Gazette Number: 55/98

COUNTRY ADVISORY BOARD: Pending

National PSS Forum

REPSSI co-hosted the National PSS forum with MMAS and other Civil Society organisations. One hundred (100) participants including the private sector,- BP (Angola and Mozambique), Mozal and Coca-Cola participated in the forum. The theme of the forum was "Strengthening Psychosocial Support contributes to Child Protection". The main objective of the National Forum in Mozambique was to raise awareness of the role of PSS interventions as crosscutting measures in enabling effective responses to children and youth issues.

REPSSI Resource Translated in Portuguese

More REPSSI resources were reviewed and translated into Portuguese. These include the Journey of Life (facilitators manual and community conversations manual), Memory work, Tree of Life, Solution Focused Approach, Intro to PSS module 12 (Facilitation skills), Training Guide for teachers. UNICEF partially funded some of the reviews.



PARTNERSHIPS:

- Ministry of Women & Social Action – participated in PSS Forum dissemination partner for SADC OVC&Y Minimum Package of Services**
- Ministry of Education & Culture**
- Ministry of Health**
- FDC – Research – Endogenous psychosocial support practices**
- World Vision**
- UNICEF**
- TdH, Soproc, ACAC & Rede Came**
- FHI – trained 268 community caregivers on the Tree of Life**
- Congegação das Irmãs de Precioso Sangue**
- Hi Chikamwe**
- Linha Fala Criança**
- Miet Africa**
- FHI 360 CAP**



NAMIBIA

Developed PSS guidelines with the Ministry of Health and Social Services



Benjamin Iiyambo
Country Representative

Number of children reached	Female	18 091
	Male	15 111
CBWCY	Female	42
	Male	7
Short Training	Female	175
	Male	35

REGISTRATION NUMBER: F/2005/00464//08

COUNTRY ADVISORY BOARD: Pending

National Guidelines for People Living with Limiting Illnesses, including HIV and AIDS

REPSSI was contracted by Project Hope to Develop guidelines and action sheets on psychosocial support services for people living with HIV and AIDS and other life limiting illnesses and their partners, families and caregivers. The final draft was approved by the MOHSS and REPSSI conducted an orientation workshop for 45 Social workers.

FNB Partnership

FNB continued to partner with REPSSI, sponsoring 20 CBWCY students and supporting short training on the Hero book and the Journey of Life for 155 Childline participants. FNB and REPSSI also hosted a partnership cocktail event, celebrating the successful partnership in Namibia. Stakeholders including Government, NAMCOL and Civil Society were invited.



PARTNERSHIPS:

Ministry of Gender Equality & Child Welfare (trained 31 young people in sexuality education)

Lifeline/Childline

CAFO

Phillipi Trust Namibia

First National Bank

NAMCOL – CBWCYC Programme



SOUTH AFRICA

National PSS Guidelines and Child Friendly Report Developed



Eric Motau
Country Director

Number of children reached
285 781

Female **143 430**

Male **142 351**

Short Training

140

Female **112**

Male **28**

REGISTRATION STATUS: Subsumed in registration of regional entity NPO: 2005/004648/0 Public Benefit organisation Section 18A

COUNTRY ADVISORY BOARD: Governed by the Regional Board of Directors

National PSS Guidelines Funded by USAID

REPSSI continued to work with the Department of Social Development (DSD) to develop the National PSS Guidelines, and indicator protocols to improve, measure and report on PSS programmes by Government and NGOs. The Guidelines were pretested in Kwazulu Natal and Gauteng. The indicator protocols will be integrated into the government’s monitoring system once they have been piloted and finalised together with the National PSS guidelines, in 2015.

Child Friendly Reports

REPSSI was contracted by PACT South Africa to develop Child friendly versions of reports of the children’s dialogues, for DSD. The two reports for age groups 12-14 and 15-19 years, were produced following consultation with children and youth who gave ideas and shared stories that were included in the reports.

Accreditation to Deliver the Certificate in Community Based Work with Children and Youth

In August 2014 REPSSI was accredited as a service provider to deliver the Child and Youth care work (60209) programme. The programme is aligned to SAQA qualifications requirements. There are currently 365 students enrolled in the programme. The students are caregivers working with the Department of Social Development in KwaZulu Natal



Child Protection week Campaign 1-8 June

REPSSI partnered with Afrika Tikkun to highlight the abuse that children in Diepsloot, North of Johannesburg have suffered. The area had seen a significant increase in the number of children, particularly girls who had been abducted, sexually assaulted and murdered. In a lead up to Child Protection week REPSSI conducted dialogues with the children in Diepsloot to ensure that children's voices were prominent and heard.

As a result of the dialogue, 451 children and youth from Diepsloot held march to raise awareness about the issues that affected them. The children and youth handed a signed memorandum to the Diepsloot station commander, calling for the establishment of a Family Violence, Child Protection and Sexual Offences Unit (FCS) based at the Diepsloot police station.

As a follow up to the Child Protection week campaign, training on the Tree of Life and Psychosocial Support concepts was conducted for the Afrika Tikkun staff based in centres in the communities of Alexander and Diepsloot. The training equipped them with skills that will enable them to respond to issues that children are facing and more importantly to be able to provide psychosocial support to children.



WE LIVE IN A WORLD THAT IS HOSTILE TO CHILDREN

THANKS to the growing outrage following the abduction in April of more than 200 schoolgirls in Chibok, Nigeria, the world is now aware of the barbaric acts against children.

This brutal act by Boko Haram highlights a sad truth: we live in a world which is hostile to children.

With more than 50 000 crimes against children reported each year (bearing in mind that the reported crimes are a fraction of the actual amount), South Africa needs to make some serious adjustments when it comes to protecting its children. And as we celebrate Child Protection Week this week, we really need to question ourselves.

Childcare is a generous term for many of the facilities available to children. Children, especially those



Eric Motau

living in townships, are the most vulnerable to the perpetrators of crime. Combine that with a society fraught with unemployment, poverty, alcohol and drug abuse and the result is a poisonous cocktail of child abuse and neglect.

By the time these children reach Grade 12, one in three girls would have been raped.

Children living with disabilities are the most vulnerable and the sickening reality is often less the case of "if" they will be abused, but rather "when". Our children are not safe.

Their constitutional rights are not being upheld. These rights are not limited to food, shelter, healthcare and education, but include the right to be cared for, loved and protected.

Elections are typically periods of self-reflection and hope. And, therefore, we can no longer ignore the obvious – the bright future all political parties promise is a pipe dream without an investment in the present.

If indeed the youth are our future (future thought leaders, mothers, fathers and responsible voters), it is unthinkable that we do not invest seriously in protecting them from their horrific reality.

Psychosocial support involves ensuring that children receive love, care and protection. The emotional and social support in chil-

dren's life is necessary to enable them to live with hope and dignity.

It is a sad reality that today many of our children have lost their parents and family, have experienced deprivation and abuse, have been stigmatised, witnessed atrocities and suffered overwhelming grief.

Lest we forget, this kind of generation will soon be leading our country and our communities.

Psychosocial support is therefore essential if they are to grow into capable and compassionate adults.

Such support means ensuring meaningful participation of children in issues that affect them, listening and responding to their problems and, in essence, giving them a voice. It also means ensuring they have positive, nur-

ture relationships and are protected from abuse.

The work of the Regional Psychosocial Support Initiative is to train its partners to provide social and emotional services to children and their communities.

We also produce materials that are positively used with children, youth, communities and families.

The Initiative hosts youth dialogues to understand what situations children are faced with and how they believe issues can be addressed. We also campaign for better child protection capacity, particularly in vulnerable areas like Diepsloot.

Communities and extended families are our most valuable resource in providing social and emotional support. No institu-

tional centre can replace the consistent care and love that the people who are on a daily basis in contact with vulnerable children provide.

Let us not become desensitised to the horrors of child abuse in South Africa. Let us commit to prioritising children's rights and also support those who are working with children who have been abused in one way or the other.

In 1993, president Nelson Mandela said: "A better society will and must be measured by the happiness and welfare of its children."

By Mandela's measure, our society has serious work to do in ensuring the welfare of children is taken care of.

● Motau is director of the Regional Psychosocial Support Initiative

PARTNERSHIPS:

Department of Social Development
Department of Basic Education
Nelson Mandela Children's Fund
Afrika Tikkun
World Vision SA
Africare SA
Methodist Church of Southern Africa
HIVSA



SWAZILAND

Inclusion of PSS in SWAZILAND's first education and training curriculum framework.



Mandla Mazibuko
Country Representative

Number of children reached	Female	57 728
	Male	62 539

CBWCY	Female	24
	Male	72

Short Training	Female	28
	Male	19

REGISTRATION STATUS: In Progress

PSS was included in Swaziland's first education and training curriculum framework and draft revised National Development Strategy (NDS)

Government partners deliver the Certificate programme

Delivery of the certificate programme is in conjunction with UNISWA which is a national institution. The certificate is part of the university's programme and there are intakes every August. There are 120 students enrolled in year 2 and 237 in year 1. Government contributes to the delivery of the certificate by providing subsidies for UNISWA. The 98 students that graduated in October from UNISWA represented a contribution of R1 372 000 (or approximately USD137 200) from the government of Swaziland. The students contributed R588 000.

Community Partnerships for Child Protection

REPSSI Swaziland participated in the Community Partnerships for Child Protection with URC and ANPPCAN. Some of the issues that were highlighted in Swaziland were the need for improved coordination at all levels and between different levels and; the need to support community level caregivers more effectively.

PARTNERSHIPS:

- Department of Social Welfare**
- Ministry of Education and Training**
- University of Swaziland delivering the – CBWCY Programme**
- Save the Children**
- World Vision International**
- Moya Centre**
- Baylor Clinic**



TANZANIA



Peter Masessa
Country Director

Number of children reached	Female 143 524
299 031	Male 155 507
CBWCV	Female 20
60	Male 40
Short Training	Female 168
318	Male 150

REGISTRATION STATUS: Certificate of compliance No. 79456

COUNTRY ADVISORY BOARD: Part of East African Sub regional board

Noreen Huni; Projestus Kahyoza; Levina Kikoyo; Dr. Kurt Madoerin; Peter Masessa; Jeanne Ndyetabura (Chair); Grace Onyango; Noah Sanganyi

Partnerships

REPSSI was a partner in the **Community Partnerships for Child Protection** with URC and ANPPCAN. Some of the issues highlighted in linking the formal services to the community informal protection system were that:

- districts which had developed a coordinated child protection system were providing much better services than those which had not
- at community level there is a perception that corruption in the system results in many cases not being addressed

KwaWazee: REPSSI has a long term partnership with KwaWazee to investigate a number of issues. Documentation of the programme supporting people living with HIV (keeping parents alive), was presented to the Tanzania International Social Protection Conference, Arusha, December 15-17, 2014. Other areas of investigation are PSS for adolescents, including adolescents that are living with HIV as well as very preliminary investigation on the impact of witchcraft on children.

PARTNERSHIPS:

- Ministry of Health and Social Welfare**
- Ministry of Social Welfare Youth and Children Development in Zanzibar**
- Ministry of Education and Vocational Training**
- Institute of Social Work**
- Africare Pamoja Tuwalee programme**
- Kwa Wazee**
- HUMULIZA**
- FHI 360 Pamoja Tuwalee Programme**
- Red Cross International**
- PASADA**
- Amani Orphan Centre**
- Catholic Relief Services**





UGANDA

REPSSI and TPO support the government to develop a national PSS training manual



Michael Byamukama
Country Representative

Number of children reached	Female	124 694
	Male	122 985
247 679		

CBWCY	Female	21
	Male	27
48		

Short Training	Female	19
	Male	11
30		

REGISTRATION STATUS: Registration as a foreign NGO operating in Uganda registration no S5914 / 10803

COUNTRY ADVISORY BOARD: Part of the East Africa Advisory Board

National PSS Training manual

The Ministry of Gender Labour and Social Development (MGLSD) requested REPSSI and its partner TPO to develop a more concise and revised National PSS Manual. The final draft was presented to the Ministry's review committee for final approval and submission to the Minister for sign off.

CBWCY Delivery

The introduction of fees for the CBWCY certificate was very difficult in Uganda. Consequently, only 53% of those that enrolled graduated. However, there has been renewed enthusiasm in the beginning of cycle 4 and we look forward to improved performance in this cycle.



- PARTNERSHIPS:
- Ministry of Gender, Labour & Social Development**
 - Ministry of Education & Sports**
 - Ministry of Health**
 - Nsamizi Training Institute of Social Development for delivery of the certificate**
 - Transcultural Psychosocial support Organisation**
 - Children's Rights Organisation**
 - Kitovu Mobile**
 - CoW Foundation**
 - HiPO Africa**
 - St Noah family**

ZAMBIA



Kelvin Ngoma
Country Director

REGISTRATION STATUS: No. C.I 887 Registration date: 20/06/2006

COUNTRY ADVISORY BOARD: North Sub-regional Board has become the Zambia Advisory Board

Sebastian Chikuta; Noreen Huni; Kaumbu Mwondela (Chair); Kelvin Ngoma; Daphetone Siame; Mary Simasiku;

214 delegates from 10 countries attend the Teachers diploma expo in Zambia

Number of children reached	Female	92 291
183 454	Male	91 163
Teacher's Diploma	Female	191
399	Male	208
CBWCY	Female	57
129	Male	72
Short Training	Female	143
252	Male	109

Teacher's diploma and Comic Relief

The first cohort of teachers on the diploma funded by Comic Relief completed their studies during 2014. Students will graduate when the process of NISTCOL becoming Chalimbana University is final

Step up programme

REPSSI was contracted by the StepUp programme in Zambia to train members of school communities in 4 districts each of the Copperbelt and Western Provinces in parasocial work. The focus was for those that had been trained to support people that are living with HIV and enable them to link to services. REPSSI was also contracted to train support group leaders in one district of the Western Province to establish support groups for people living with HIV. The programmes included follow up and monitoring to ensure that the training was being utilized to benefit the school communities.

Kondwa and KCDA

REPSSI has supported two of our traditional partners, Kondwa Home Based Care and Kafue Child Development Agency to strengthen the mainstreaming of PSS into their programmes. This has involved short training as well as training of child mobilizers in the CBWCY certificate.

"When I joined KCDA as a volunteer I had no formal training and I had just completed grade 12. After I completed the CBWCY training KCDA employed me because of the knowledge I had gained on the course. I was employed because of the CBWCY certificate and I was engaged in ChildFund training programmes where I use the knowledge I gained on the course to train others such as peer educators"- Charles Mugala.



PARTNERSHIPS:

- Ministry. of Education, Science, Vocational Training & Early Education**
- ChildFund Zambia**
- Kondwa Home Based Care**
- CAMFED (The Campaign for Female Education)**
- Chalimbana University, Chipata & Mongu Colleges of Education for delivery of the Teachers Diploma**
- Mindolo Ecumenical Foundation (Delivery of CBWCY)**
- MiET**
- UNICEF**
- Step Up Zambia**



ZIMBABWE



Brighton Gwezera
Country Director

Number of children reached	Female 152 587
296 586	Male 143 999
CBWCY	Female 35
86	Male 51
Short Training	Female 275
561	Male 286

REGISTRATION STATUS: Registered PVO 10/12

COUNTRY ADVISORY BOARD: Zimbabwe Advisory Board functional

Dr Jonathan Brakarsh, Farayi Chamba, Brighton Gwezera, Rev Dixon Chambara, Nellie Dhlembeu, Victoria James, Noreen Huni, Hon Justice Euna Makamure (Chair), Sibusisiwe Marunda, Tara Millar,

World Education – Teacher training

The World Education Inc contracted REPSSI to conduct the short Psychosocial training for 503 teachers. The teachers were selected from 15 World Education partners in 24 districts in Zimbabwe. the training emphasised the significance of psychosocial wellbeing to improving learning; child participation catering for individual psychosocial needs of learners as they are all unique;. The training also included a session in sexual and reproductive health. The training included pre and post assessment. REPSSI is planning follow up assessment.



PARTNERSHIPS:

- Ministry of Primary and Secondary Education**
- Child Protection Society**
- MASO**
- BHASO**
- FCTZ**
- FOST**
- MMPZ**
- Masiye Camp**
- The School of Social Work (Delivery of CBWCY)**
- National Aids Council**
- Community Focal Persons**
- World Education Inc**

Based on audited Financial statements

Income Summary 2014

	2014 €	%
Carry over ICP funds	2 460 326	37%
Donors	3 656 940	54%
Own Income (Social Enterprise)	593 601	9%
TOTAL	6 710 867	100%

Table 1: Income Summary 2014

Table 1 above, shows overall donor income including funds carried over from 2013 as well as REPSSI's own Income in 2014. Donor Income was lower as funding from Novartis Foundation for Sustainable Development was reduced. REPSSI's own income increased significantly on prior year in line with the sustainability initiatives that the organisation is embarking on.

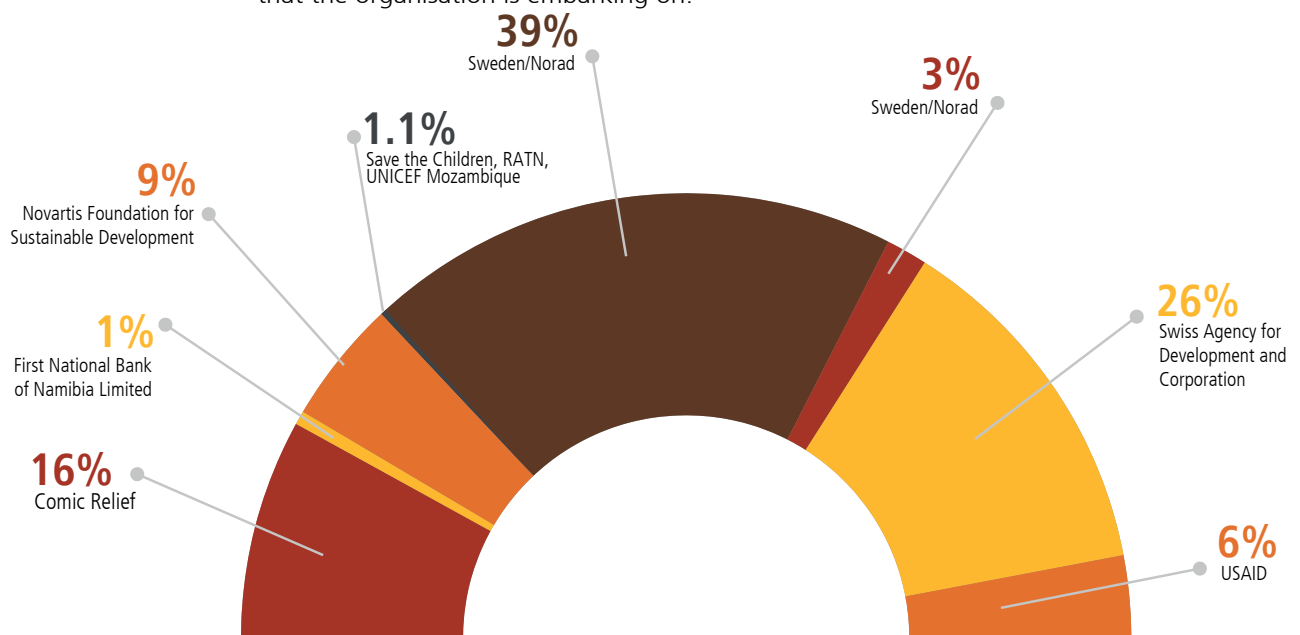


Figure 1: International Cooperating Partners (ICPs) funding portfolio – Dec 2014

Sweden/Norad and Swiss Agency for Development and Cooperation (SDC) continue as the major contributors to REPSSI funding with 43% and 26% respectively.

Comic Relief contributes 16% followed by Novartis Foundation for Sustainable Development 9%, USAID 6% and First National Bank Namibia 1%. 1.1% of the funding came from smaller contracts from RATN, UNICEF Mozambique, and Save the Children.

Based on audited Financial statements

Income Summary 2014

	Number of Donors	Amount €	%
In country	4	1 327 544	22%
Regional	6	4 789 722	78%
TOTAL	10	6 117 266	100%

Table 2: Regional Funding versus Country Funding Donor Funds

REPSSI has begun in country resource mobilisation to reduce reliance on regional funding only. Country funding is now just over a fifth of the overall funds.

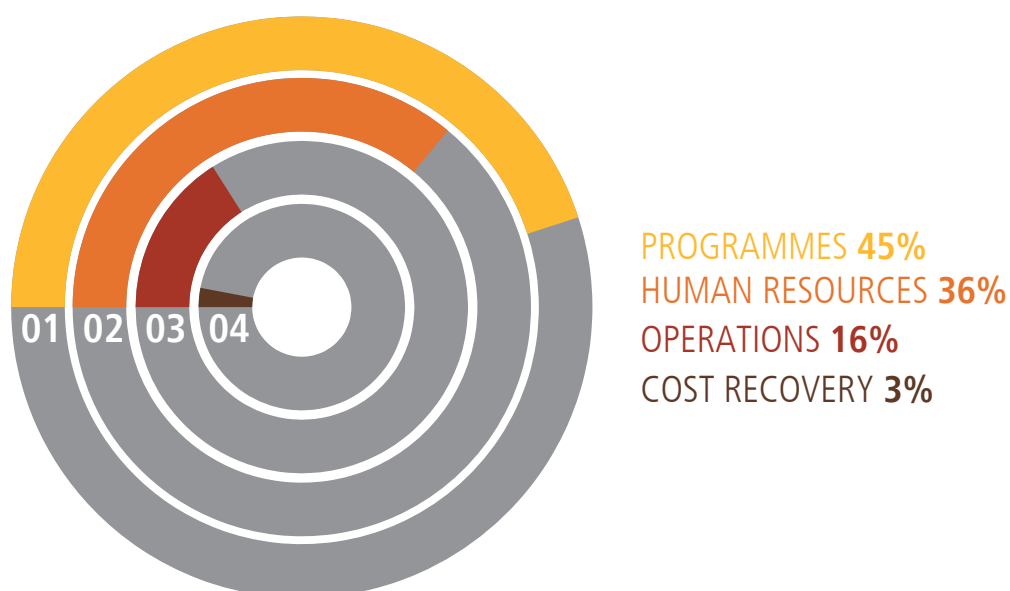


Figure 2: Expenditure Summary – December 2014

Of the total annual expenditure, programme expenditure accounted for 45%. Programme expenses include programme monitoring and research. Human resources expenditure was 36% and Operational expenditure 16%. Operational Expenditure includes purchase of assets and governance activities. The higher operational expenditure in 2014 was necessitated by registering and setting up offices in a few countries (Malawi, Swaziland, Lesotho and Angola), where REPSSI did not previously have physical presence. It is believed that once this sustainability move begins to yield results, the operational costs as a percentage of the total will reduce significantly. 3% of expenditure in 2014 went to sustainability initiatives.

Of the Programme expenditure, Resource development including research constituted 17%, 20% was spent on Advocacy activities and Technical Support comprised the bulk of the expenditure at 63%.

Based on audited Financial statements

REGIONAL PSYCHOSOCIAL SUPPORT INITIATIVE (NPC)

Statement of Financial Position for the year ended 31 December 2014

	2014 €	2013 €
ASSETS		
Non-Current Assets		
Plant and equipment	153 205	177 440
Current Assets		
Trade and other receivables	113 480	55 911
Cash and cash equivalents	3 304 888	3 485 512
	3 418 368	3 541 423
Total assets	3 571 573	3 718 863
EQUITY AND LIABILITIES		
Capital and Reserves		
Accumulated surplus	1 515 473	1 048 918
	1 515 473	1 048 918
Current Liabilities		
Trade and other payables	173 206	209 619
Deferred income	1 882 894	2 460 326
	2 056 100	2 669 945
Total equity and liabilities	3 571 573	3 718 863

Statement of changes in Equity for the year ended 31 December 2014

	Accumulated Profit €	Total €
Balance at 01 January 2013	961 257	961 257
Total comprehensive income for the year	87 661	87 661
Balance at 31 December 2013	1 048 918	1 048 918
Total comprehensive income for the year	466 555	466 555
Balance at 31 December 2014	1 515 473	1 515 473

Statement of Comprehensive Income for the year ended 31 December 2014

	2014 €	2013 €
Revenue	4 577 954	4 558 566
Other income	592 015	108 209
Operating expenses	(4 705 000)	4 581 042)
Operating profit	464 969	85 733
Investment revenue	1 586	1 928
Surplus and total comprehensive income for the year	466 555	87 661

“Master trainer development process made a huge change into my life, especially when dealing with communities. I had acquired skills that I had never before and learn that my life is like a long journey full of joys and challenges.”

LOIDE M. EELU – CAA - NAMIBIA

REPSSI International

Cooperating Partners

- Sweden / NORAD
- Swiss Agency for Development and Cooperation
- Novartis Foundation for Sustainable Development
- Comic Relief
- USAID PEPFAR
- FNB (Namibia)
- RATN (now ACA)
- Stanbic (Botswana)
- BP (Angola)
- Health Care Improvement project/University Research company (URC)
- United Nations Children's Fund – Mozambique
- Save the Children
- Synergos with support from the Samuel Family Foundation

Cover and publication photo ©REPSSI/Willem De Lange/the Lesotho Red Cross Society. Used with Permission

COPYRIGHT

©REPSSI is the copyright owner of all material contained in this publication, with the exception of any information, photographs or material attributed herein to other source.

In terms of the South African Copyright Act, No98 of 1978, no part of this publication may be reproduced or transmitted in any form or by any means, electronic or mechanical, including photocopying, recording or by any information storage and retrieval system, without prior permission in writing from REPSSI, or, where the aforementioned photographs or material are concerned, from relevant copyright holder

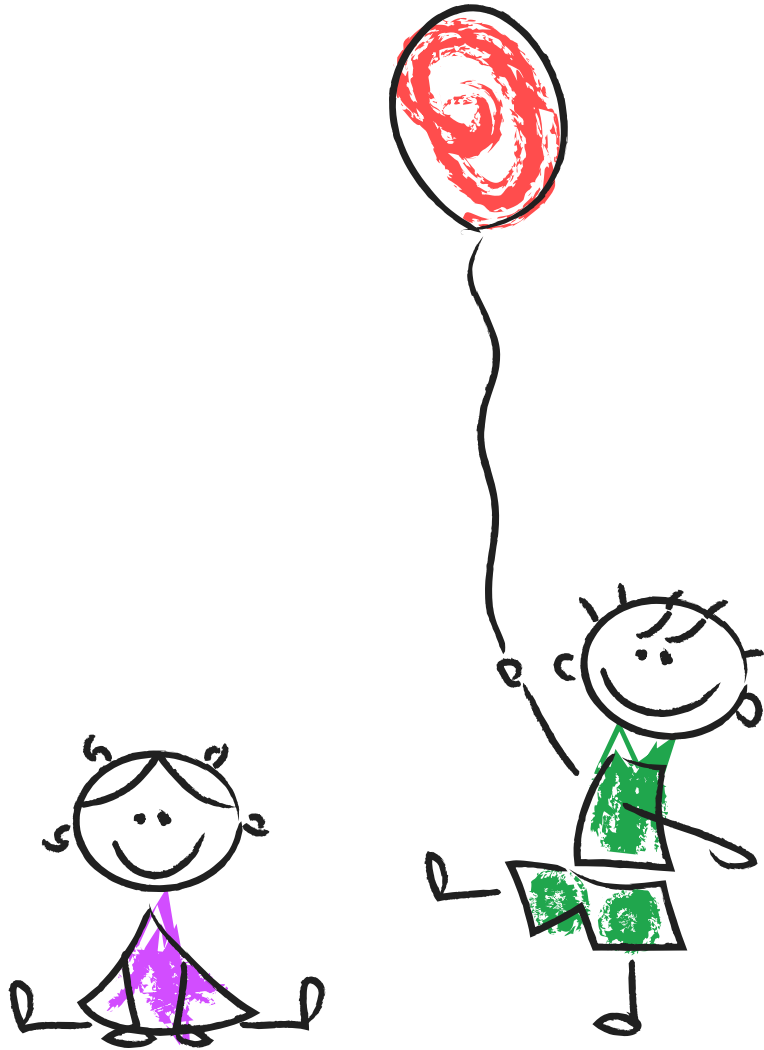


"PSS has also helped change my attitude towards the slow learners at the school. I now focus on these children and give them extra work in reading and writing. I also make time to meet with them after classes on selected days and tutor them in areas or topics where they face difficulties."

Muleta Simasiku, Teacher

Notes

Lined area for writing notes, consisting of multiple horizontal lines.



2014
Annual Report

Email: info@repssi.org
Tel: +27 11 998 5920

Postal address: Po Box 1669, Randburg, 2125, Johannesburg, South Africa

REPSSI (2015), REPSSI Annual Report 2014. Johannesburg: REPSSI. www.repssi.org.

The opinions expressed herein are those of the author(s) and do not necessarily reflect the views of any of the funding partners



www.repssi.org